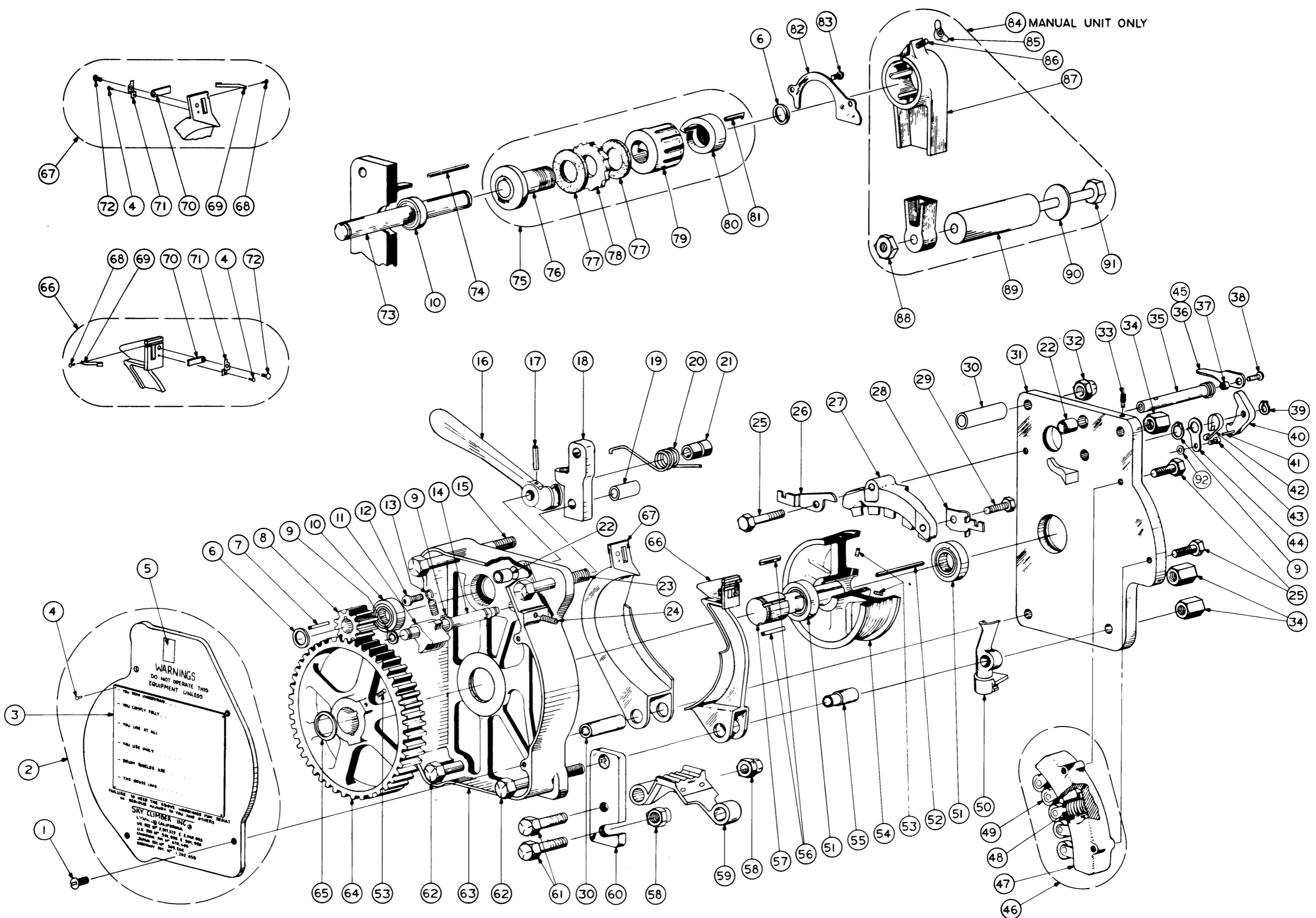


PARTS LIST

MANUAL UNIT MODEL M4

NOTE: No parts can be shipped without model and serial numbers. Example: Model No.—M4 Serial No.—M1145

Item No.	Part No.	Description	Qty	Item No.	Part No.	Description	Qty
1	103-12-1	Screw	4	47	100-91-1	Housing, Roller	1
2	100-221-1	Gear Cover Assembly	1	48	100-96	Spring	5
3	102-382	Plate, Legend	1	49	100-135	Roller Assembly	5
4	103-88	Screw, Drive	6	50	100-159	Guide	1
5	102-242	Decal-UL	1	51	100-56	Bearing	2
6	100-23	Ring, Retaining	2	52	100-53	Key	1
7	100-48	Key, Square	1	53	100-114	Screw, Set	3
8	100-47	Pinion	1	54	100-52	Drum	1
9	100-43	Ring, Retaining	3	55	100-70-3	Spacer	1
10	100-49	Bearing	2	56	100-62	Key	2
11	100-38	Pawl	1	57	100-57-1	Shaft, Drum	1
12	100-118-1	Screw	1	58	100-180	Nut-Lock	2
13	100-35-1	Spring	1	59	100-219	Shield Assembly, Lower	1
14	100-39	Shaft	1	60	100-156	Strap, Stirrup	1
15	100-80	Screw	1	61	100-179-1	Screw	2
16	100-24-2	Lever	1	62	100-82-1	Screw	2
17	100-122	Pin, Roll	1	63	100-64-1	Plate, L.H. Side	1
18	305-179-1	Guide, Safety	1	64	100-230	Gear	1
19	100-31-2	Spacer, Guide	1		or		
20	100-28-1	Spring	1		100-59	Gear	1
21	100-27-2	Spacer, Stop	1	65	100-58	Ring, Retaining	1
22	100-84-2	Bushing	2	66	100-188	Shield Assembly, Front	1
23	100-110-1	Screw	1	67	100-189	Shield Assembly, Rear	1
24	100-128-2	Screw-Set	1	68	103-83	Screw	2
25	100-123	Screw	3	69	100-215	Spring	2
26	100-193-1	Bracket	1	70	100-214	Latch	2
27	100-89-2	Guide, Fairlead	1	71	100-217	Guard	2
28	100-194-1	Bracket	1	72	103-94	Screw	2
29	100-133-2	Screw	1	73	100-17-1	Shaft	1
30	100-67	Spacer	2	74	100-138	Key	1
31	100-63-2	Plate, R.H. Side	1	75	100-16-1	Brake Assembly	1
32	103-33	Nut, Lock	1	76	100-150-1	Bushing	1
33	100-94-1	Pin	1	77	100-19-1	Brake Lining	2
34	100-111	Nut	3	78	100-21-1	Ratchet	1
35	100-199	Shaft, Safety	1	79	100-151	Coupling	1
36	100-197	Lever, Electric	1	80	100-152	Cam, Brake	1
37	100-201	Bushing	1	81	100-153	Key	1
38	100-200	Screw	1	82	100-66-1	Cover	1
39	100-42	Ring, Retaining	1	83	100-79-1	Screw	2
40	100-103	Pawl	1	84	100-121-3	Handle Assembly	1
41	100-125	Pin, Roll	1	85	100-144	Nut, Wing	1
42	100-130	Spring	1	86	103-146	Set Screw	1
43	100-132	Screw	1	87	100-75-2	Handle	1
44	100-131	Retainer	1	88	103-238	Nut, Jam	1
45	101-25	Lever, Air	1	89	103-242-1	Grip	1
46	100-90-1	Tension Roller Assembly	1	90	107-629	Washer	1
				91	103-239	Screw	1
				92	100-154	Washer-Flat	1



84) MANUAL UNIT ONLY